

COUNT	DESCRIPTION OF REVISIONS	BY	CHKD	DATE	COUNT	DESCRIPTION OF REVISIONS	BY	CHKD	DATE
△					△				
△					△				

APPLICABLE STANDARD			
RATING	OPERATING TEMPERATURE RANGE	-30 °C TO 70 °C	STORAGE TEMPERATURE RANGE - °C TO - °C
	VOLTAGE	AC 125 V	OPERATING HUMIDITY RANGE - % TO - %
	CURRENT	0.5 A	APPLICABLE CABLE -

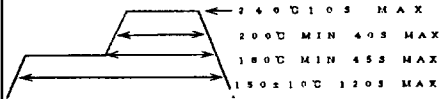
### SPECIFICATIONS

ITEM	TEST METHOD	REQUIREMENTS	QT	AT
------	-------------	--------------	----	----


CONSTRUCTION				
GENERAL EXAMINATION	VISUALLY AND BY MEASURING INSTRUMENT.	ACCORDING TO DRAWING.	○	○
MARKING	CONFIRMED VISUALLY.		○	○


ELECTRIC CHARACTERISTICS				
CONTACT RESISTANCE	100 mA (DC OR 1000 Hz).	40 mΩ MAX.	○	○
INSULATION RESISTANCE	100 V DC.	250 MΩ MIN.	○	○
VOLTAGE PROOF	300 V AC FOR 1 min.	NO FLASHOVER OR BREAKDOWN.	○	○

MECHANICAL CHARACTERISTICS				
INSERTION AND WITHDRAWAL FORCES	MEASURED BY APPLICABLE CONNECTOR.	INSERTION FORCE 20 N MAX. EXTRACTION FORCE 2 N MIN.	○	-
MECHANICAL OPERATION	10000 TIMES INSERTIONS AND EXTRACTIONS.	① CONTACT RESISTANCE: 60 mΩ MAX. ② NO DAMAGE, CRACK AND LOOSENESS, OF PARTS.	○	-
VIBRATION	FREQUENCY 10 TO 55 Hz, SINGLE AMPLITUDE 0.75 mm, AT 2 h, FOR 3 DIRECTIONS.	① NO ELECTRICAL DISCONTINUITY OF 10 μs. ② NO DAMAGE, CRACK AND LOOSENESS, OF PARTS.	○	-
SHOCK	490 m/s <sup>2</sup> DIRECTIONS OF PULSE 11 ms AT 3 TIMES FOR 6 DIRECTIONS.		○	-
LOCKING FORCE	PULL THE CONNECTOR, CABLE AXIALLY	50 N MIN.	○	-

ENVIRONMENTAL CHARACTERISTICS				
RAPID CHANGE OF TEMPERATURE	TEMPERATURE -55 → 5~35 → 85 → 5~35 °C TIME 30 → 2~3 → 30 → 2~3 min UNDER 5 CYCLES.	NO DAMAGE, CRACK AND LOOSENESS, OF PARTS.	○	-
DAMP HEAT (STEADY STATE)	EXPOSED AT 60 °C, 90~95 %, 96 h.	① INSULATION RESISTANCE: 100 MΩ MIN. (AT DAY) ② NO DAMAGE, CRACK AND LOOSENESS, OF PARTS.	○	-
CORROSION SALT MIST	EXPOSED IN 5% SALT WATER SPRAY FOR 48 h.	NO HEAVY CORROSION.	○	-
SOLDERING CONDITION	 <p>240 ± 10 °C MAX 200 °C MIN 40 S MAX 180 °C MIN 45 S MAX 150 ± 10 °C 120 S MAX</p> <p>THERE SHALL BE NO DEFECT AT CONDITION.</p>		○	-

FOR REFERENCE ONLY  
Subject to change without notice

REMARKS	DRAWN	DESIGNED	CHECKED	APPROVED	RELEASED
Unless otherwise specified, refer to JIS C 5402.	M. Shingama 01.3.14	M. Shingama 01.3.14	J. Enami 01.3.14	H. Murai 01.03.14	

Note QT:Qualification Test AT:Assurance Test ○:Applicable Test		PART NO.	
 HIROSE ELECTRIC CO., LTD.		SPECIFICATION SHEET 3260B-12S3 (01)	
CODE NO. (OLD)	DRAWING NO.	CODE NO.	1/1
	ELC4-120858-02	CL232-0090-4-01	

FORM No.231-1

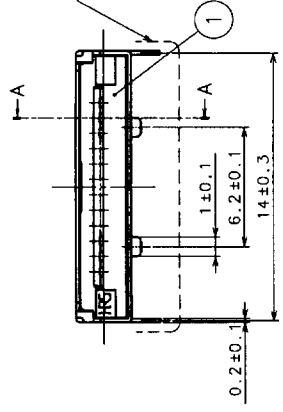
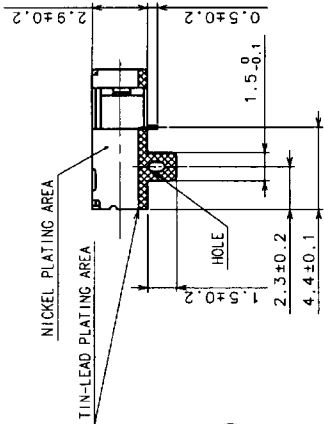
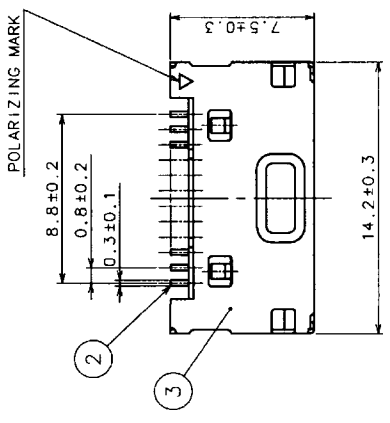
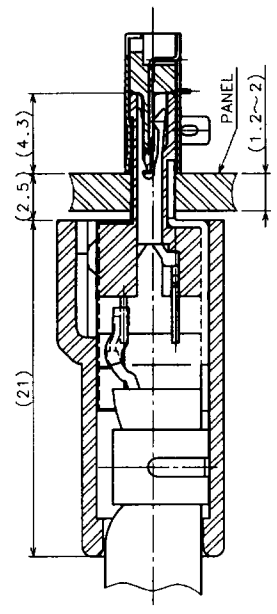
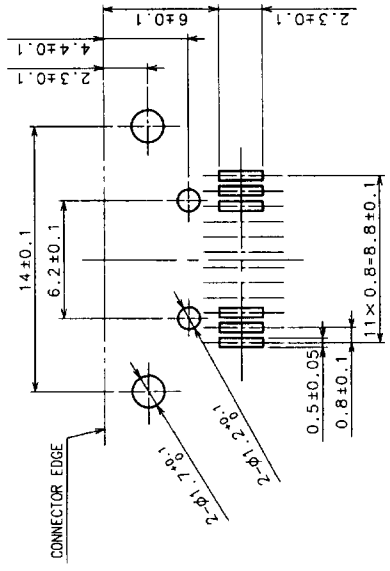


TO  
Q1

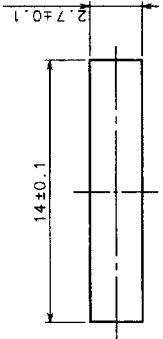
NO.	DESCRIPTION OF REVISIONS	BY	CHKD	DATE	COMT	DESCRIPTION OF REVISIONS	BY	CHKD	DATE

MOUNTED CONNECTOR ON PCB  
MOUNTING FACE

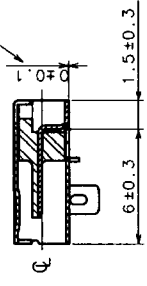
FIGURE OF MATING



PANEL CUTOUT



A-A  
CO-PLANARITY



**FOR REFERENCE ONLY**  
Subject to change without notice

NO.	MATERIAL	FINISH, REMARKS	DESIGNED	CHECKED	APPROVED	FINISH, REMARKS
1	PPS	BLACK (UL94V-0)				SELECTIVE TIN-LEAD PLATING
2						SELECTIVE GOLD PLATING
3						

DRAWN: *M. Hasegawa*  
 CHECKED: *Y. Enoki*  
 APPROVED: *H. Minato*  
 DATE: 01.3.14  
 PART NO.: 3260B-12S3(01)  
 CODE NO.: EDC3-120858-02  
 SCALE: 4:1  
 UNITS: mm  
**HRS** HIROSE ELECTRIC CO., LTD.  
 CODE NO.: CL232-0090-4-01

TO	
Q1	